

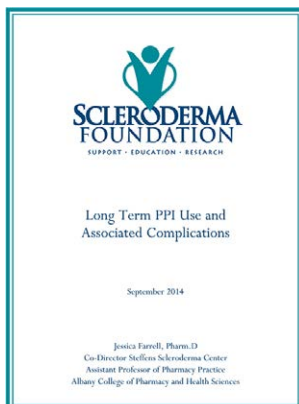
[View this message on our website.](#)[Homepage](#) | [Forward to a Friend](#) | [Make a Donation](#)

# SCLERODERMA FOUNDATION

SUPPORT • EDUCATION • RESEARCH

eLetter #584 | December 5, 2014

## New Brochure Available: Long Term PPI Use and Associated Complications



Proton pump inhibitors (PPIs) are commonly used to treat heartburn, ulcers or gastroesophageal reflux disease (GERD). PPIs work by inhibiting the proton pump in parietal cells (the cells that create stomach acid). As a result of this inhibition, the amount of stomach acid produced is decreased. PPIs are available in both prescription and over-the-counter formulations, making them increasingly accessible and commonly misused. For many people, the use of a PPI, especially long-term use, is not necessary and may promote unwanted side effects. For other patients, such as those with scleroderma, the use of PPI therapy vastly outweighs the side effect-associated risks.

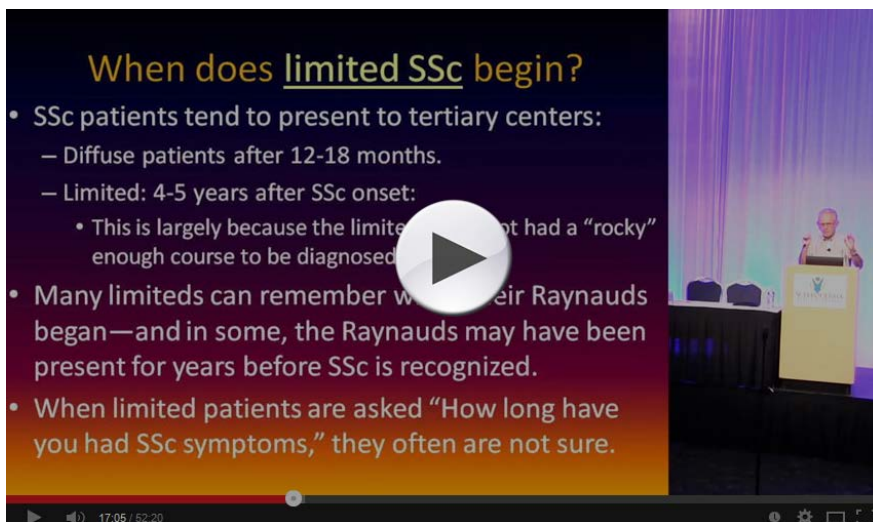
[Download the new brochure from our website >>](#)[Browse our library of downloadable brochures, including some versions in Portuguese and Spanish >>](#)

## Video: What the Doctors Should Have Told Me About Scleroderma

[Donate](#)

### Quick Links

[Advocacy](#)[Contact Us](#)[Become a Member](#)[About Scleroderma](#)[Online Chat](#)[Store](#)[Home](#)



In this week's video from the the 2014 Patient Education Conference in Anaheim, CA presented by Dr. Philip Clements, patients will learn how to answer five of the most important questions that should have been answered by the doctor during a primary consultation:

1. Do I have scleroderma?
2. When did my scleroderma begin (a fact needed to help predict the future)?
3. How is my skin thickening going to change?
4. What visceral involvements (heart, lung, kidney, GI) do I currently have?
5. What are the probabilities that I will develop visceral involvements over time?

[Watch the video on YouTube >>](#)

[Go to the Scleroderma Foundation's YouTube channel to view more Conference videos >>](#)

**Stay tuned to the weekly eLetter as we share more videos from this year's Conference!**

## Bayer to Evaluate SGC Stimulator Riociguat in Patients With Diffuse Systemic Sclerosis



Bayer HealthCare announced the initiation of a randomized, double-blind, placebo-controlled Phase II study to investigate the efficacy and safety of riociguat against placebo in patients with diffuse cutaneous systemic sclerosis (dcSSc), the most severe form of systemic sclerosis. The development of riociguat in dcSSc is part of the recently announced worldwide strategic collaboration with Merck & Co., Inc. (known as MSD outside of the U.S. and Canada) in the field of soluble guanylate cyclase (sGC) modulation.

[Read the entire release at PipelineReview.com >>](#)



Silver Conference Sponsor



2014 Corporate Sponsor

**Genentech**  
A Member of the Roche Group

## Stay Connected to Friends While Caregiving



Social isolation is a common but unfortunate condition for many family caregivers. The longer family caregivers provide help to loved ones, the less social support they usually receive. In part, it occurs when some friends and neighbors, even other family members, gradually distance themselves from the caregiver and the caregiving situation. Loss of social support, however, also can be caused by the choices caregivers make.

[Read the entire article at AARP.org >>](#)

**Disclaimer:** The Scleroderma Foundation in no way endorses any drugs, treatments, clinical trials, or studies reported in the eLetter. Information is provided to keep the readers informed. Because the manifestations and severity of scleroderma vary among individuals, personalized medical management is essential. Therefore, it is strongly recommended that all drugs and treatments be discussed with the reader's physician(s) for proper evaluation and treatment.

POWERED BY  
**blackbaud**

[Unsubscribe](#) | [Visit our web site](#) | [Contact Us](#) | [Donate](#)  
300 Rosewood Drive, Suite 105, Danvers, MA 01923 tel: 800-722-HOPE (4673)  
© 2014 All rights reserved.